

Product Overview





P627

Available with internal relief device - R627 version

P627 & P630 - High Flow Regulators

The P627 and P630 are spring loaded, direct-operated regulators for both low and high pressure applications in the oil and gas industries.

Options/Features

- P627 & P630 available as Relieving Regulators
- P627 & P630 available with Flanged End Connections
- P627 available with Socket Weld End Connections
- P627 & P630 available as NACE Construction
- P627 available with LCC Threaded Bodies
- P627 & P630 available in Low Pressure Models
- P627 available with Monitor Porting
- L627 has Red Bonnet - UL listed as an LP gas regulator

Applications

- Farm tap regulation
- Monitoring regulators
- First cut or second stage regulator
- Transmission to distribution bridge



P630

Available with internal relief device - P630R version



P289 - Spring Loaded Throttling Relief Valve

Options/Features

- Available in 1" and 2" Connection sizes
- Brass or Stainless Seat Material
- Nitrile and Fluoroelastomer materials
- Ranges from 7" WC to 75 psig

Applications

- Protection of Downstream System Components
- Minimizing Pressure Surges
- Back Pressure Regulation
- Uses in Air, Process Gases, Natural Gas

P119 - Control Valve

The P119 Control Valve is used for on-off or throttling service of corrosive or noncorrosive gases or liquids, limited by available compatible materials.

Options/Features

- Steel unit is NACE Compliant
- Tight Shut-off
- Positive shutoff at Maximum Working Pressures
- 3/4", 1" & 1-1/4" Connection Sizes
- 3 to 60 PSIG in 4 Ranges

Applications

- On-Off or Throttling Control
- Fuel Valve Heaters



P119

P95 - Pressure Reducing Regulator

Rugged and durable, direct operating pressure reducing regulator for industrial, oil and gas and water / waste water applications that require severe service reliability.

Options/Features

- 1/2", 3/4" & 1" Connection Sizes
- 15 to 150 PSIG in 3 Ranges
- Rugged Cast Construction

Applications

- Steam Injection
- Process Heaters
- Power Boilers, Line Purges
- Municipal Water / Waste Water



P95

P98 - Back Pressure Regulator / Relief Valve

Rugged direct operated pressure regulator / relief valve for severe service and durability in the field with metal or composite seat materials.

Options/Features

- 3/4" & 1" Connection Sizes
- 15 to 200 PSIG in 4 Ranges
- Rugged Cast Construction

Applications

- Pulp & Paper Boilers
- Refining Heat Tracing
- Air Supply Systems
- Chemical Manufacturing



P98

P200 - Pressure Regulator

The P200 pressure regulator is a widely used industry standard in use at city gates as service regulators, oil and gas compression skids for natural gas engines and on large taps for industrial and large commercial gas regulation. The P200 is a very stable, direct acting regulator where gas use varies greatly and load changes are normal practice. BelGAS has meticulously produced an industry standard regulator with the all the quality and material requirements of our BelGAS line of regulators made in the United States. Over 250,000 cycles have been applied to assure a reliable, quality product is being produced. 100% pressure tested for leakage and flow tested to assure accuracy requirements are met.



P200

Options and Features

- Ports sizes available in 1-1/4" up to 2"
- Future availability of flanged body (Iron Only)
- Spring ranges from 2" water column up to 10 psi
- Relieving version and Non-relieving
- Iron and steel body options
- Tapped lower casing option for down stream controls
- Variable orifice sizes from 1/4" up to 1-3/16"
- Options for body and bonnet vent orientation
- Available as a "Head" version to be used as replacement with the body/orifice assembly already installed in line.

Applications

- Industrial or commercial gas regulation
- Large burner / boiler control
- Stationary natural gas engine feed
- High variable gas load installations

P133 - Pressure Regulator

The P133 pressure regulator is also a widely used industry standard in use on gas boilers and burners or other appliances requiring an accurate flow over a wide range of outputs. The P133 is a direct acting regulator with a balanced diaphragm design that allows the regulator to maintain tight pressure control with accuracy from the low 2" water column setting up to the maximum setting of 10 psi. The balanced diaphragm design also makes the P133 an ideal pressure monitor device. The BelGAS P133 is an industry standard regulator with the all the quality and material requirements made in the United States. 100% pressure tested for leakage and flow tested to assure accuracy requirements are met.



P133

Options and Features:

- Future availability of flanged body
- Ports sizes only available in 2"
- Spring ranges from 2" water column up to 10 psi
- Iron and steel body options
- 3/4" FPT control connection
- Restriction collars in 25%, 40% or 60% of max flow available
- Options for body and bonnet vent orientation

Applications

- Industrial or commercial gas regulation
- Large burner / boiler control
- Stationary natural gas engine feed
- Uses in Natural and Propane gas
- Gas monitoring installations

P143 - Pressure Regulator

The BelGAS P143 pressure regulator is a direct operating, pressure reducing regulator suitable for use in natural gas, propane gas, air and general purpose applications. A widely used industry standard, the P143 is installed for light commercial or industrial applications for burners and unit heaters or any gas application where a light flow and lower pressures are required. The P143 is a stable regulator where gas use varies and load changes are normal practice. 100% pressure tested for leakage.

Options and Features

- Ports sizes available in 3/4" and 1 1/4"
- Spring ranges from 3.5" water column up to 33" water column
- Relieving version only
- Optional Low Pressure Cut-Off version (LPCO) Iron body only
- Variable orifice sizes from 1/8" up to 5/8"
- Options for body and vent orientation

Applications

- Burner and unit heaters
- Light industrial or commercial gas regulation
- Natural gas or propane gas use



P143

P912 - Low Pressure Regulator

The P912 direct-operated, spring-loaded regulator is suitable for a variety of gaseous fluids, including natural gas, propane, and air.

Options/Features

- Pressures Down to Inches of Water
- Tapped Vent with Removable Screen
- Internal Relief Feature
- 1/4" & 3/8" Connection sizes
- 3" W.C. to 5 PSIG in 6 Ranges

Applications

- Fuel Gas
- Line Heaters
- Burner Control
- Small LP Applications



P912

P600 - Pressure Regulator

The BelGAS P600 pressure regulator is a direct operating, pressure reducing regulator that can also be used as a pressure loaded regulator, switching valve or monitoring regulator. A widely used industry standard, the P600 is at home in the oil and gas compression skid environment for natural gas engines and on commercial gas regulation. The P600 is a very stable, direct acting regulator where gas use varies greatly and load changes are normal practice. 100% pressure tested for leakage.

Options and Features:

- Ports sizes available in 3/4" and 1"
- Spring ranges from 4" water column up to 7 psi
- Relieving version and Non-relieving
- Iron body and housing only
- Monitoring option
- Variable orifice sizes from 1/8" up to 9/16"
- Options for body and bonnet vent orientation

Applications

- Industrial or commercial gas regulation
- Variable gas load installations
- Gas monitoring
- O&G NG engine skids

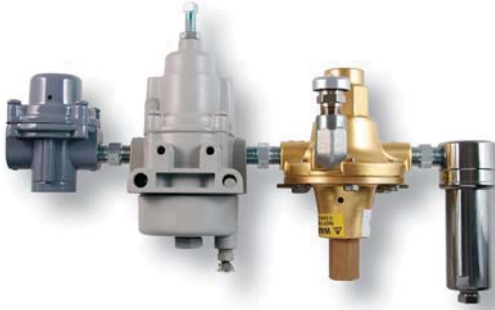


P600

P1367 - Instrument Supply Manifold System

The P1367 supply manifold offers a complete package for reducing a high pressure supply system down to a filtered, instrument level pressure supply.

P1367



Options/Features

- NACE Construction available
- P350 Stainless Filter standard
- 1/4" Connection

Applications

- High Pressure Line Take Off
- Instrument Supply Range 10 PSI to 60 PSI

P350 - Stainless Filter

Options/Features

- Max Operating Pressure of 4,000 PSIG
- 25 Micron Glass MicroFiber and Stainless Mesh
- 1/4" Connection
- Manual Drain available

Applications

- Used in the P1367 Supply Manifold
- Instrument Supply Filter

P350



P39 - High Pressure Regulator

The P39 regulator is Ideal for high pressure reduction, pilot gas regulation or utilized as a pressure loading regulator using natural gas, process gases, air and liquids.

Options/Features

- Brass, Stainless or Nickel Plated
- Tapped Bonnet Vent available
- Nylon, Teflon and PTFE Seats
- 30 to 500 PSIG in 6 Ranges

Applications

- First Cut Regulator
- Instrumentation Columns
- Gas distribution Systems

P39



P800 - Relief Valve

Options/Features

- Non-rising Adjustment Assembly
- Large 0.344 Relief Seat Diameter
- Large Diaphragm Area
- 1/4" NPT Ports
- Max Operation Pressure 250 PSI
- Factory Preset - Plugged and Tamper Resistant
- 1/2" Tapped Vent

Applications

- Down Stream Instrument Overpressure Protection

P800





P32

P32 - Non-Relieving Regulator

- UL Listed
- NACE available (Non-UL)
- 60-Mesh particulate screen
- 250 PSIG supply / up to 30 SCFM flow
- 1/4" connections - 1/4" tapped vent
- 10 to 120 PSIG in 4 Ranges



P36

P36 - Non-Relieving Regulator

- UL Listed
- NACE available (Non-UL)
- 60-Mesh particulate screen
- 250 PSIG supply / up to 30 SCFM flow
- 1/4" connections - 1/4" tapped vent
- Selectable Ranges up to 60 PSIG



P37

P37 - Non-Relieving Regulator

- UL Listed
- Minimal supply pressure effect
- 400 PSIG supply / 110 scfm; 16.5 Mbtu/hr. flow
- 1/2" & 3/4" connections - 1/4" tapped vent
- 10 to 125 PSIG in 4 Ranges



P38

P38 - Balanced Supply Valve Regulator

- UL Listed
- Minimal supply pressure effect
- 400 PSIG supply / 260 scfm; 27 Mbtu/hr. flow
- 3/8", 1/2", 3/4" & 1" connections - 1/4" tapped vent
- 30 to 125 PSIG in 3 Ranges



P40

P40 - Self Relieving Regulator

- NACE available
- Several mounting options
- 250 PSIG supply / up to 20 SCFM flow
- 1/4" connections - 1/4" tapped vent
- Relieving regulator with no constant bleeding
- 10 to 120 PSIG in 4 Ranges



P70

P70 - Self Relieving Regulator

- NACE available
- 0.25" water column pressure setting obtainable
- Minimal supply pressure effect
- 250 PSIG supply / up to 80 SCFM flow
- 1/4", 3/8" & 1/2" connections - 1/4" tapped vent
- 15 to 150 PSIG in 5 Ranges



P51SSR



P51SSAR



P51SSAF

P50 - Filter Regulator

- NACE available
- Non-relieving option available
- 250 PSIG supply / up to 20 SCFM flow
- 5 or 40 micron self cleaning particulate filter
- Drip bowl with manual drain
- 1/4" connections - 1/4" tapped vent
- 10 to 120 PSIG in 4 Ranges



P50

P51SSR - Relieving Regulator

- Conforms to NACE standard
- 250 PSIG supply / up to 20 SCFM flow
- 1/4" & 3/8" connections - 1/4" tapped vent
- Non-relieving option available
- 30 to 150 PSIG in 4 Ranges

P51SSFR - Relieving Filter Regulator / Manual Drain

- Conforms to NACE standard
- 5 or 40 micron self cleaning particulate filter
- 250 PSIG supply / up to 20 SCFM flow
- 1/4" & 3/8" connections - 1/4" tapped vent
- Non-relieving option available
- 30 to 150 PSIG in 4 Ranges



P51SSFR

P51SSAR - Relieving Filter Regulator / Auto Drain

- Conforms to NACE standard
- 5 or 40 micron self cleaning particulate filter w/Automatic drain
- 250 PSIG supply / up to 20 SCFM flow
- 1/4" & 3/8" connections - 1/4" tapped vent
- Non-relieving option available
- 30 to 150 PSIG in 4 Ranges

P51SSF - Filter Assembly / Manual Drain

- Conforms to NACE standard
- 5 or 40 micron self cleaning particulate filter
- 1/4" & 3/8" connections



P51SSF

P51SSAF - Filter Assembly / Auto Drain

- Conforms to NACE standard
- 5 or 40 micron self cleaning particulate filter
- 1/4" & 3/8" connections

T2000 - I/P or E/P Input/Signal to Pressure Transducer

The T2000 Input/Signal to Pressure Transducer uses a closed-loop pressure feedback system for precision pressure output and minimal environment effects.

Options/Features

- High precision, 0.1% accuracy typical
- Vibration and position insensitive
- DIP switches permit field selection of inputs and direct/reverse/split ranging
- Very wide selection of input and output ranges
- NEMA 4X (weatherproof) and intrinsically safe are standard
- Explosion proof model available
- 140 PSIG max pressure input

Applications

- Valve Actuators and Positioners
- Relays
- Pipeline Transmission
- Oil & Gas Production Skids



T2000

T170 - Explosion Proof Motorized Regulator

The T170 Motorized Pressure Regulator (M/P) is an electronic pressure regulator utilizing stepper motors and is used in Hazardous Area valve control in the Gas industry.



Options/Features

- 12-24 VDC Power Input
- 0.5 to 30 psig Output Pressure
- 40 SCFM Regulator Flow Rate
- 1/4", 3/8" or 1/2" Connections
- NEMA 4X/IP65 Enclosure
- FM Class I, Div. 1, Groups B, C, D
- FM Class II, Div. 1, Groups E, F, G
- FM Class III, Div. 1, Group D

Applications

- Custody Transfer Stations
- Remote Low-Power Operations
- Precision Valve Control



T170

P79V



P79V - Volume Pressure Booster

The P79V volume pressure booster is used on control valves to speed up the operation of the valve. The P79V is standard with an adjustable bypass valve or can be ordered without the bypass valve. Also available in a high relief version or non-relieving.

Options and Features

- Ports sizes available in 3/8" up to 1"
- Bypass valve standard
- No relief and High relief available

Applications

- Valve control volume booster

M1 & M2



M1 & M2 Filter Regulators

- Polycarbonate bowls
- 5, 25 or 50 micron particulate filter
- 145 PSIG supply / up to 120 SCFM flow
- Manual or semi-auto drains
- 1/8", 1/4", 3/8" & 1/2" connections

NEEDLE VALVES



Needle Valves

BelGAS Standard Needle Valves offer four choices in 316 stainless steel as well as one piece forged carbon plated steel; soft seat and hard seat, angle and globe styles. The Mini Valve offers 2 choices in 316 stainless steel and bar stock plated carbon steel; soft seat and hard seat globe style, T-bar and thumb wheel operation.

These valves are suited for instrumentation, process plant use, oil and gas production and general applications where isolation and positive shutoff is a requirement.

- All valves are deigned to the following standards;
- ANSI B31.1.0 – Power Piping
 - ANSI B11.20 – Fuel Gas Piping
 - ANSI B31.3 – Chemical Plant Petroleum Refinery Piping
 - ASME Section VII-DIV1 – Boiler & Pressure Vessel Code



W Series - X-Mas Tree Gauge

- Well Head Applications
- 4-1/2" Dial Size
- Stainless Case, Stainless Tube & Socket
- Single Scale PSI Dial, Micrometer Pointer



J & X Series - Severe Service

- Severe & Rugged Service Applications
- 63mm & 100mm Dial Sizes
- Stainless Case, Brass or Stainless Tube & Socket
- Dual & Single Scale available
- Liquid Fill available



H, HW & HN Series - Precision Service

- Severe & Rugged Service Applications
- 100mm & 160mm Dial Sizes
- Stainless Case, Brass or Stainless Tube & Socket
- Dual & Single Scale available
- NACE Compliant Gauges available

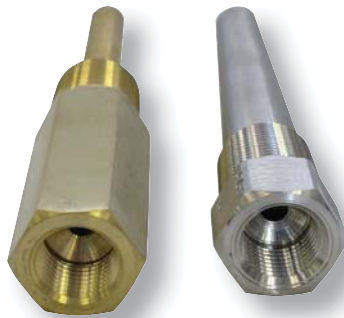


GG Series - General Service

- Suited for Water, Gas, Oil, Air & Non-Corrosives
- 1-1/2", 2" & 2-1/2" Dial Sizes
- Steel Case, Brass Tube & Socket
- Dual Scale PSI / KPA Dial

L Series - Bimetal Thermometers

- Dual Scale F / C Dials
- Stainless Case and Stems
- -50 to 1000 Fahrenheit in 9 ranges



Thermowells

- Brass, 304 Stainless Steel or 316 Stainless Steel
- Tapered or Straight Shank
- 0.260 and 0.385 Standard Bore Sizes
- Threaded, flanged, and socket welded for easy connection





BelGAS™

A DIVISION OF MARSH BELLOFRAM

Represented by: *Archway Control, LP*

301 Ave. H, Fort Madison, IA 52627

309-258-0410